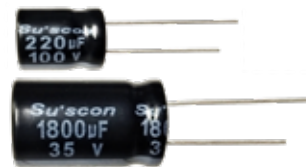


UH series

- 130°C High temperature, high ripple current at high frequency.
- Specially designed for electronic ballast and energy saving lamp.
- Load Life: 2,000~3,000 hours.
- RoHS Compliance
- 130°C 耐高溫, 高紋波及高頻率。
- 專為電子整流器和節能燈。
- 2,000~3,000小時壽命。



SPECIFICATIONS

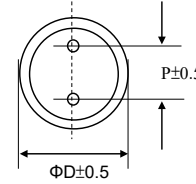
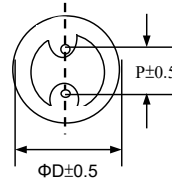
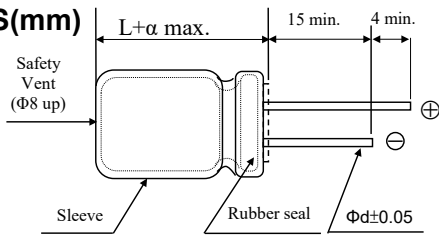
Items 項目	Characteristics 特性												
Capacitance Tolerance 靜電容量誤差	± 20%(120Hz, 20°C)												
Operating Temperature Range 適用溫度範圍	- 40 ~ +130°C						- 40 ~ +130°C			- 25 ~ +130°C			
Rated Voltage Range 額定電壓範圍	10 ~ 100VDC						160 ~ 250VDC			350 ~ 450VDC			
Leakage Current 洩漏電流	I ≤ 0.01CV or 2 (µA) which is greater. (After 2 minutes application of DC rated voltage, at 20°C)						I ≤ 0.03CV + 20 (µA) (After 3 minutes application of DC rated voltage, at 20°C)						
Leakage Current 散逸因素 (tan δ)	Measurement Frequency: 120Hz. Temperature: 20°C												
	Rated Voltage(V)	10	16	25	35	50	63	100	160	200	250	350 ~ 450	
	tan δ (Max)	0.20	0.16	0.14	0.12	0.10	0.10	0.10	0.15	0.20	0.20	0.24	
	When nominal capacitance over 1000µF, tan δ shall be added 0.02 to the listed value with increase of every 1000µF .												
Low Temperature Stability 低溫特性 Impedance Ratio(Max) 阻抗比率(最大值)	Measurement Frequency: 120Hz												
	Rated Voltage(V)	10	16	25	35	50	63	100	160	200	250	350 ~ 450	
	Z(-25°C) / Z(20°C)	3	2	2	2	2	2	3	3	3	3	6	
	Z(-40°C) / Z(20°C)	8	6	4	4	4	4	4	6	6	6	-	
Load Life 負荷壽命	The following specifications shall be satisfied when the capacitors are restored to 20°C after subjected to DC voltage with the rated ripple current is applied for 3,000 hours(ΦD ≤ 8: 2,000 hours) at 130°C.												
	Capacitance Change	within ±25% of Initial Value											
	tan δ	200% or less of Initial Specified Value											
	Leakage Current	Initial Specified Value or less											
Shelf Life 放置壽命	The following specifications shall be satisfied when the capacitors are restored to 20°C after exposing them for 1,000hours 130°C without voltage applied. Before the measurement. The Capacitance shall be preconditioned by applying voltage according to them 4.1 of JIS C5101-4.												
	Capacitance Change	within ±25% of Initial Value											
	tan δ	200% or less of Initial Specified Value											
	Leakage Current	Initial Specified Value or less											
Standards 參照標準	IEC 60384-4 (JIS C 5101-4)												

Frequency Coefficient of Permissible Ripple Current

Rated Voltage (V)	Capacitance (µF)	Frequency (Hz)			
		50	120	1K	≥10K
≤ 100	< 100	0.50	0.70	0.85	1.00
	100 ~ 1500	0.65	0.75	0.90	1.00
	> 1500	0.75	0.80	0.95	1.00
≥ 160	1.8~5.6	0.20	0.40	0.80	1.00
	6.8~100	0.40	0.75	0.90	1.00

UH series

DIMENSIONS(mm)



ΦD	8	10	12.5	16
P	3.5	5.0	5.0	7.5
Φd	0.5	0.6	0.6	0.8

α	(L < 20) 1.5
	(L ≥ 20) 2.0

STANDARD RATINGS

DxL (mm); R.C.: (mA rms) at 130°C, 100kHz.

Cap (μF)	V	10		16		25		35		50		63	
		Item	D x L	R.C.	D x L	R.C.	D x L	R.C.	D x L	R.C.	D x L	R.C.	D x L
3.3										8x11.5	70	8x11.5	60
4.7										8x11.5	100	8x11.5	90
10										8x11.5	150	8x11.5	130
22										8x11.5	200	8x11.5	180
33										8x11.5	250	10x12.5	400
47										8x11.5	300	10x16	450
100		8x11.5	340	8x11.5	340	8x11.5	340	10x12.5	620	10x12.5	520	12.5x20	820
220		8x11.5	340	10x12.5	620	10x12.5	620	10x16	800	10x20	890	12.5x25	1000
330		10x12.5	580	10x12.5	620	10x16	800	10x20	960	12.5x20	1000	16x25	1500
470		10x12.5	620	10x16	800	10x20	960	12.5x20	1430	12.5x25	1200	16x31.5	1650
1000		10x20	960	12.5x20	1430	12.5x25	1430	16x25	1900	16x31.5	1850	16x35.5	1820
2200		12.5x25	1430	16x25	1900	16x31.5	2300	16x35.5	2300				
3300		16x25	1900	16x31.5	2300	16x35.5	2550						
4700		16x31.5	2300	16x35.5	2550								

Cap (μF)	V	100		160		200		250		350		400		450	
		Item	D x L	R.C.	D x L	R.C.	D x L	R.C.	D x L	R.C.	D x L	R.C.	D x L	R.C.	D x L
2.2												10x16	68	10x16	60
3.3										10x16	84	10x16	82	10x16	72
4.7		8x11.5	80	8x11.5	80	8x11.5	80	10x16	70	10x16	105	10x16	100	10x20	90
5.6		8x11.5	118	8x11.5	100	8x15	118	10x16	130	10x16	150	10x20	160	10x20	110
6.8		8x11.5	145	8x14	130	8x15	145	10x16	150	10x20	186	10x20	180	10x20	150
10		8x11.5	200	10x16	200	10x16	200	10x20	224	10x20	215	10x20	220	12.5x20	255
22		8x11.5	220	10x20	300	10x20	350	12.5x20	400	10x25	255	12.5x20	350	12.5x25	355
33		10x12.5	260	10*20	350	12.5x20	480	12.5x25	510	12.5x25	420	12.5x25	390	16x25	580
47		10x16	330	12.5x25	528	12.5x25	528	16x20	620	16x25	650	16x25	630	16x30	625
100		12.5x20	670	16x25	716	16x25	650	16x26	680	16*35.5	780	16x35.5	680	16x40	750
220		16x25	1100	16x30	750										
330		16x31.5	1300												

UH